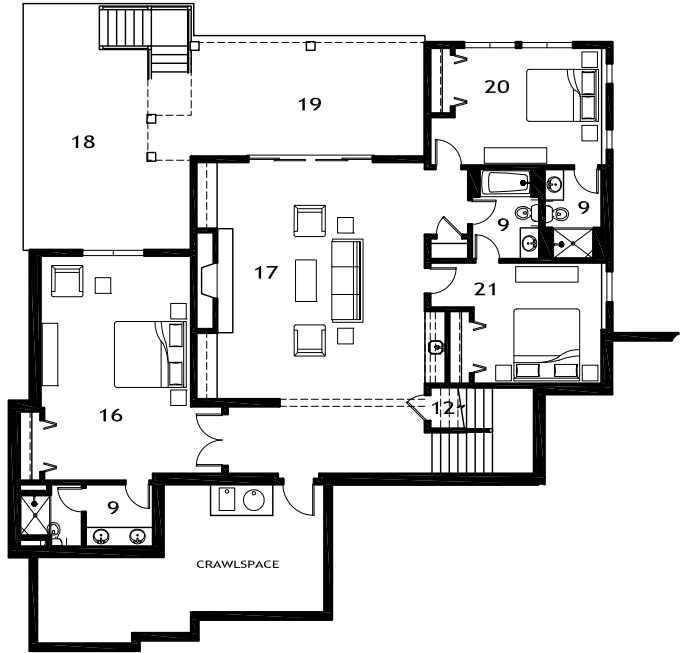
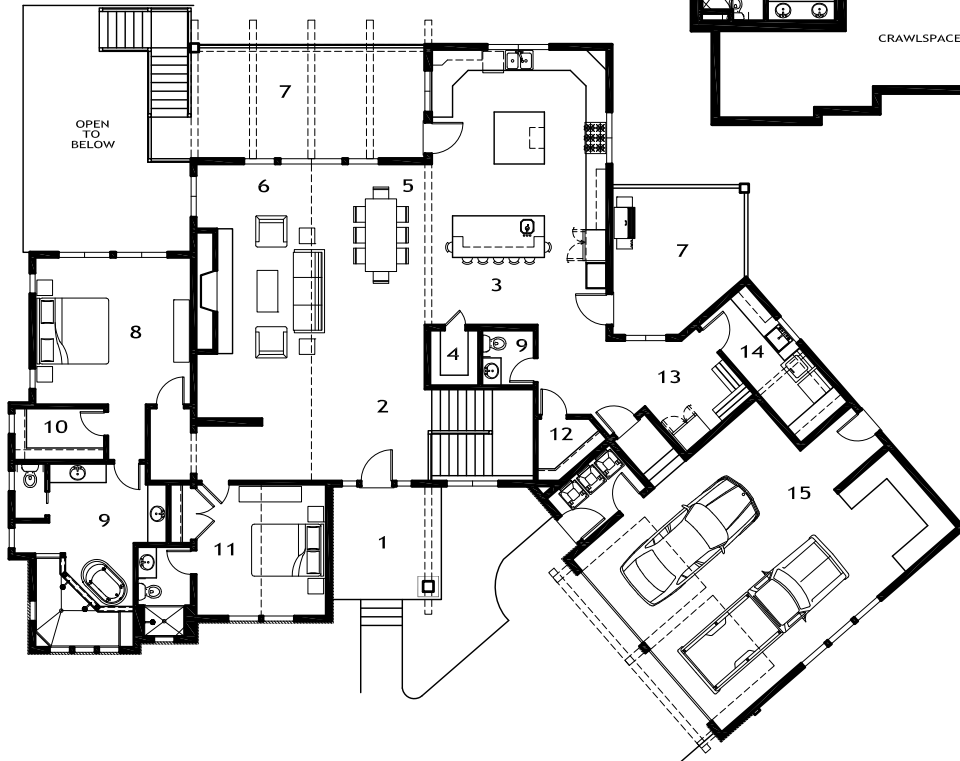




- 1 - COVERED PORCH
- 2 - FOYER
- 3 - KITCHEN
- 4 - PANTRY
- 5 - CASUAL DINING (20'-0" x 12'-0")
- 6 - GREAT ROOM (16'-0" x 24'-6")
- 7 - COVERED DECK
- 8 - MASTER SUITE (15'-0" x 14'-2")
- 9 - BATHROOM
- 10 - WALK IN CLOSET
- 11 - GUEST SUITE (12'-6" x 12'-8")
- 12 - STORAGE
- 13 - MUD ROOM
- 14 - LAUNDRY
- 15 - GARAGE (21'-0" x 24'-0")
- 16 - BEDROOM 3 (21'-6" x 14'-8")
- 17 - REC ROOM (16'-0" x 22'-10")
- 18 - PATIO
- 19 - COVERED PATIO
- 20 - BEDROOM 4 (14'-2" x 11'-4")
- 21 - BEDROOM 5 (12'-4" x 11'-8")



LOWER FLOOR



MAIN FLOOR

BENSON RES. | 4-39 | 272 PORTAL COURT

NASH & ASSOCIATES
ARCHITECTS

8003 118th Avenue NE
Kirkland, WA 98033 (425) 828-4117
www.Nash-Architects.com

PLAN 4187

OVERALL EXTERIOR DIMENSIONS

92'-0" width x 66'-10" depth

AREA SUMMARY

Main Floor : 2,479 SF
Lower Floor : 1,708 SF
Total Area : 4,187 SF
Garage : 731 SF

Nash & Associates reserves the right to modify or change our plans