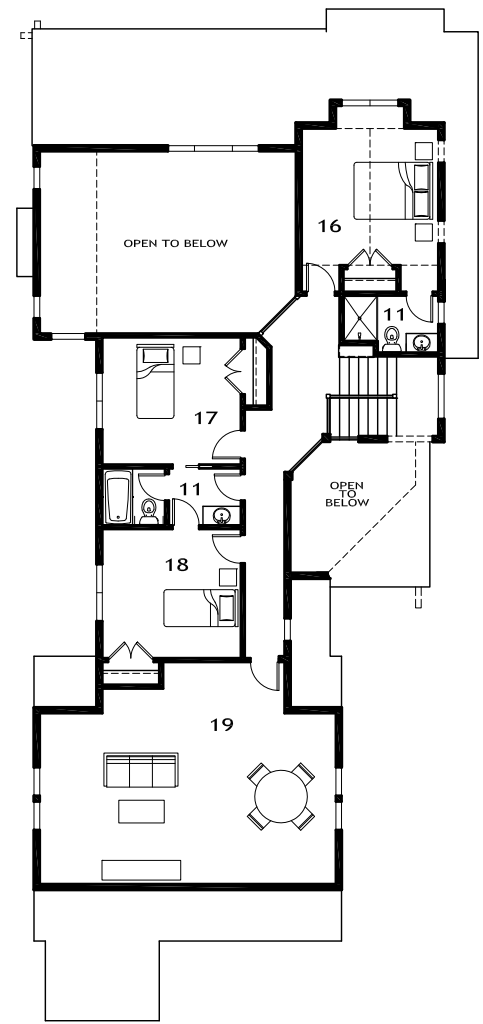


- 1 - COVERED PORCH
- 2 - FOYER
- 3 - STORAGE
- 4 - KITCHEN
- 5 - PANTRY
- 6 - CASUAL DINING (13'-0" x 10'-0")
- 7 - GREAT ROOM (22'-6" x 16'-0")
- 8 - COVERED PATIO
- 9 - PATIO
- 10 - MASTER SUITE (14'-4" x 13'-8")
- 11 - BATHROOM
- 12 - WALK IN CLOSET
- 13 - MUD ROOM / LAUNDRY
- 14 - GARAGE (21'-0" x 24'-0")
- 15 - TRASH
- 16 - BEDROOM 2 (12'-0" x 12'-0")
- 17 - BEDROOM 3 (12'-2" x 11'-2")
- 18 - BEDROOM 4 (12'-2" x 11'-4")
- 19 - BONUS ROOM (15'-0" x 24'-0")



CRAIG REIMER | 1-95 | 1360 SNOWBERRY LOOP

NASH & ASSOCIATES
ARCHITECTS

8003 118th Avenue NE
Kirkland, WA 98033 (425) 828-4117
www.Nash-Architects.com

PLAN 2876

OVERALL EXTERIOR DIMENSIONS

40'-6" width x 88'-10" depth

AREA SUMMARY

Main Floor : 1,564 SF
Upper Floor : 1,311 SF
Total Area : 2,876 SF
Garage : 754 SF

Nash & Associates reserves the right to modify or change our plans