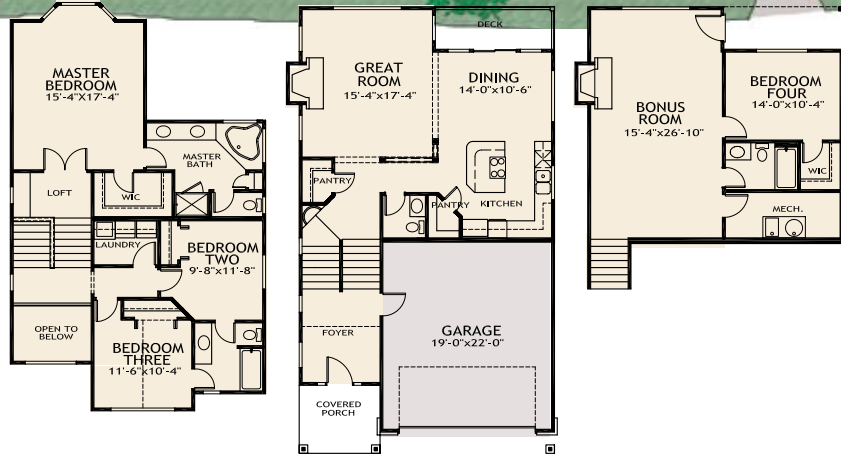


KIDDER HEIGHTS

Kidder Heights is a unique neighborhood which exemplifies what can be accomplished when developers, architects and city planners work together. This high density neighborhood, developed in the heart of an established community, was originally zoned for multi-family apartments. Realizing that the lands best use would be single family homes, NJA worked with the developer and city to create a planned unit development of seventeen homes. These homes maintain the integrity of the surrounding community while offering a unique setting for the homeowners.



Upper floor

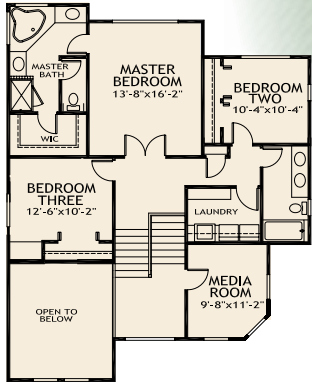
Main floor

Lower floor

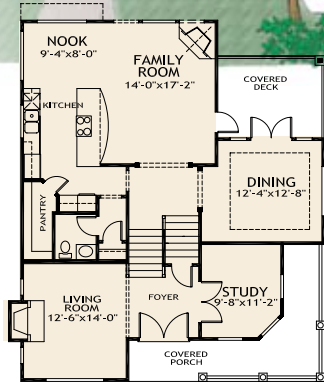
PLAN 2742

- 2742 S.F. Total Living Area
 - 926 sf Main
 - 1069 sf Upper
 - 747 sf Lower
 - 418 sf Garage
- Overall Exterior dimensions:
30'-0" width x 49'-6" depth

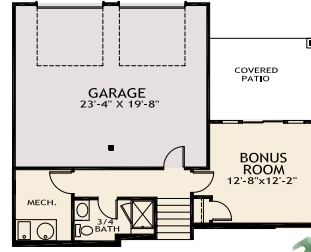




Main floor



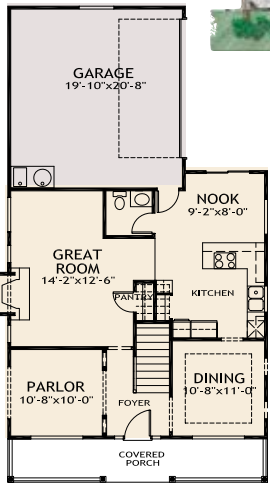
Upper floor



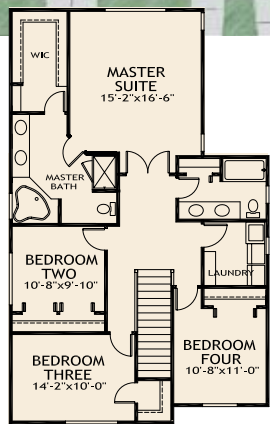
Lower floor

PLAN 2828

- 2828 S.F. Total Living Area
- 1264 sf Main
- 1199 sf Upper
- 365 sf Lower
- 418 sf Garage
- Overall Exterior dimensions:
37'-0" width x 44'-0" depth



Main floor



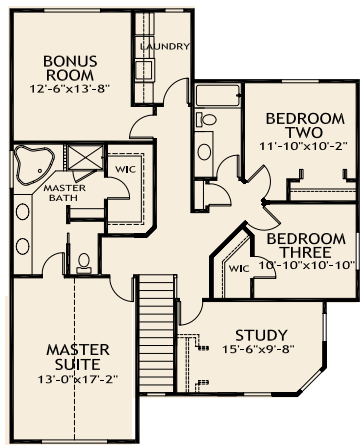
Upper floor

PLAN 2142

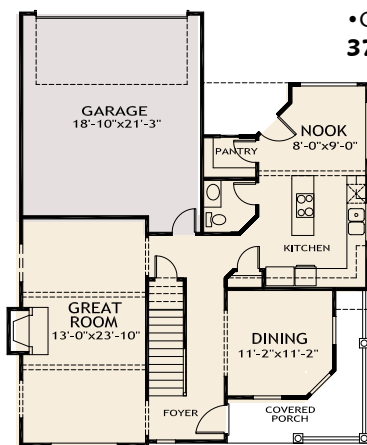
- 2142 S.F. Total Living Area
- 870 sf Main
- 1272 sf Upper
- 430 sf Garage
- Overall Exterior dimensions:
30'-0" width x 49'-4" depth

PLAN 2747

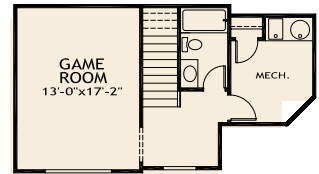
- 2747 S.F. Total Living Area
- 977 sf Main
- 1368 sf Upper
- 402 sf Lower
- 405 sf Garage
- Overall Exterior dimensions:
37'-0" width x 44'-0" depth



Upper floor



Main floor



Lower floor

