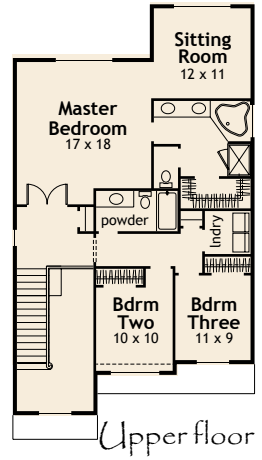
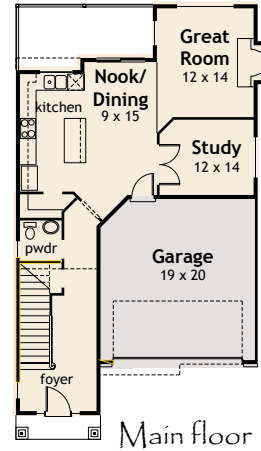


COUNTRY WOODS



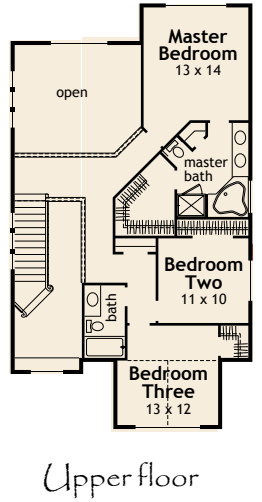
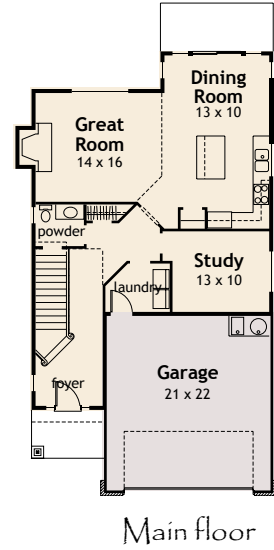
PLAN 1993

- 1993 S.F. Total Living Area
867 sf Main
1127 sf Upper
- Overall Exterior dimensions:
30'-0" width x 51'-0" depth



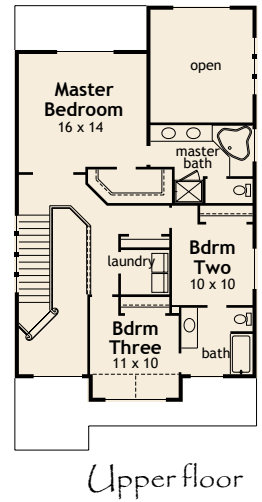
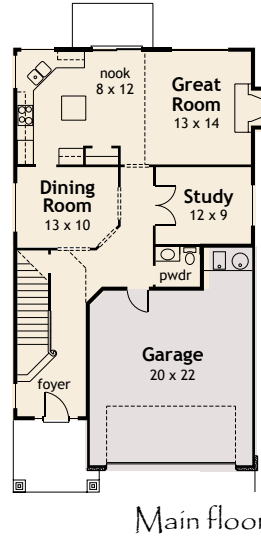
PLAN 1971

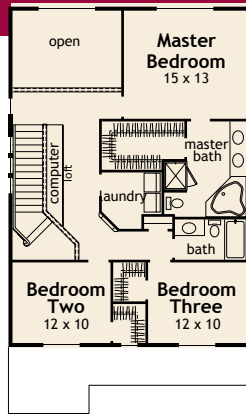
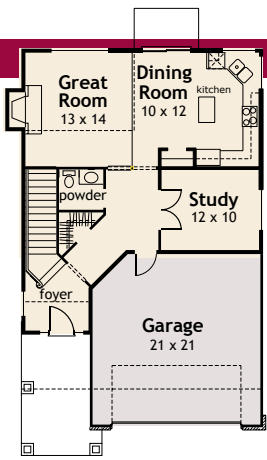
- 1971 S.F. Total Living Area
1023 sf Main
948 sf Upper
- Overall Exterior dimensions:
30'-0" width x 52'-2" depth



PLAN 1988

- 1988 S.F. Total Living Area
1019 sf Main
969 sf Upper
- Overall Exterior dimensions:
30'-0" width x 54'-10" depth



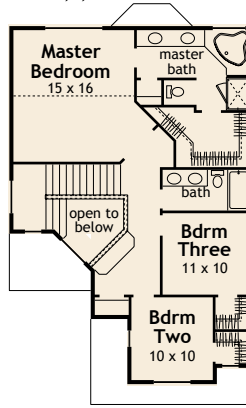
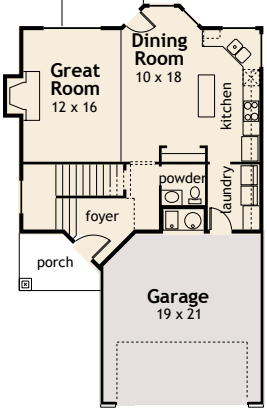


Main floor

Upper floor

PLAN 1901

- 1901 S.F. Total Living Area
- 858 sf Main
- 1043 sf Upper
- Overall Exterior dimensions:
30'-0" width x 47'-0" depth

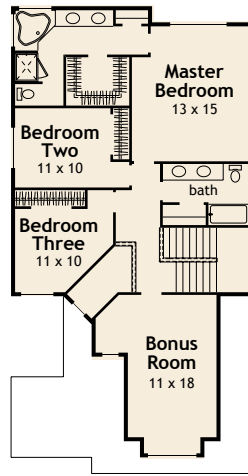
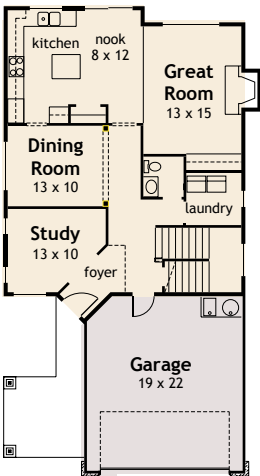


Main floor

Upper floor

PLAN 1755

- 1755 S.F. Total Living Area
- 790 sf Main
- 965 sf Upper
- Overall Exterior dimensions:
30'-0" width x 49'-4" depth

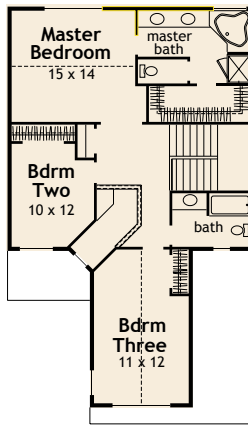
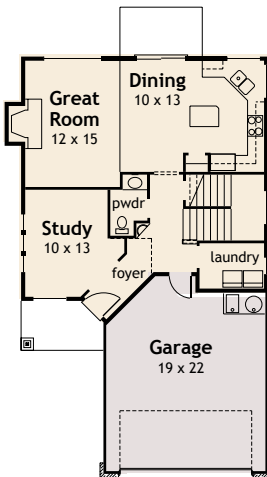


Main floor

Upper floor

PLAN 1868

- 1868 S.F. Total Living Area
- 868 sf Main
- 1000 sf Upper
- Overall Exterior dimensions:
30'-0" width x 50'-8" depth



Main floor

Upper floor

PLAN 2256

- 2256 S.F. Total Living Area
- 1067 sf Main
- 1189 sf Upper
- Overall Exterior dimensions:
30'-0" width x 58'-0" depth

